

## EFFECT OF BAP ALONG WITH 2,4, D ON THE INDUCTION OF SHOOTS FORMATION ON POTATO CULTIVAR ARIZONA IN VITRO

Hadi Hoobi SHALLAL 

Baghdad, Iraq, Middle Technical University, College of Applied Arts

Email: [hadi.hoobi@mtu.edu.iq](mailto:hadi.hoobi@mtu.edu.iq)

### Abstract

This examination delves into the many-sided transaction between two key development controllers, BAP (6-benzylaminopurine) and 2,4-Dichlorophenoxyacetic acid (2,4-D), exploring their aggregate effect on shoot induction in the in vitro development of the esteemed potato cultivar Arizona. The study is fastidiously designed to unwind the nuanced effect of these controllers on shoot commencement inside a controlled lab setting. Potato micropropagation stands as a fundamental feature of horticultural advancement, and the feeling of proficient shoot development fills in as a crucial stage in this cycle. The exceptional development attributes of Cultivar Arizona provide an ideal stage for assessing the synergistic impacts of BAP and 2,4-D on the commencement and multiplication of shoots. By carefully noticing and measuring the reaction of potato explants to fluctuating focuses and mixes of BAP and 2,4-D, this study expects to discern ideal conditions conducive to enhanced shoot development. Through detailed analysis and observation, the research seeks to contribute valuable insights into refining in vitro cultivation methodologies for potato propagation, aiming at elevating efficiency and yield.

**Keywords:** *Potato micropropagation, BAP (6-benzylaminopurine), 2,4-Dichlorophenoxyacetic acid (2,4-D), Shoot induction, Cultivar Arizona*

### I. INTRODUCTION

One of the most significant vegetable crops and the fourth most important crop in the world is the cultivated potato, scientifically known as *Solanum tuberosum* L. Low germinability and significant variability in the segregant generations prohibit the use of botanical seeds from the tetraploid potato species in commercial agriculture. The following nutrients are found in potatoes: 31.7% vitamin B<sub>6</sub>, 2.4% potassium, 22.2% copper, 22.1% vitamin C, 19% manganese, 17.3% phosphorus, 15.2% vitamin B<sub>3</sub>, 15.2% fibre, and 13.0% pantothenic acid. Potatoes contain glycoalkaloids, which are hazardous to humans and animals, although this information is not widely known. A glycoalkaloid called solanine is present in potatoes. When consumed in large enough quantities, it can irritate the gastrointestinal tract, affect the neurological system, and perhaps induce teratogenic or birth abnormalities. Some neurological symptoms may manifest as involuntary urination, weakening of the muscles, coma, convulsions, or ataxia.

Various glycoalkaloids are produced by potatoes. Of them, solanine is the most famous because of its association with food poisoning. Between thirty and eighty percent of the solanine in potato tubers forms on or near the epidermis. Solanine is a glycoalkaloid that has three sugars attached to its steroid alkaloid nucleus. The presence of solanine in plants makes it the most potent cholinesterase inhibitor in food (Amini, A., et al. 2019).

Plantlet regeneration from potato callus, in vitro germination of seeds and sprouts as explants, and induction of callus from various components of germinated in vitro plantlets are all topics covered in



this study. Cytokinin and auxin-supplemented media was used for in vitro cell proliferation of the regenerate plantlets. The cytokinin utilised for micropropagation of regenerated shoots was BA, while the auxin utilised was IBA. Root initiation was carried out in medium supplied with IBA, whereas multiplication was carried out in media supplemented with BA and 2,4-D. Using varying concentrations of soilless media in a polyhouse, shoots grown in a controlled environment were allowed to harden. The overall population's average survival rate was 60% (Chen et al. 2018).

- ❖ **Arizona America:** "The state of Arizona is one that is located in the countries southwest. Admitted to the Union on February 14, 1912, it is the 48th state. Arizona is renowned for having a variety of landscapes, such as mountains, canyons, forests, and deserts. Phoenix is Arizona's largest city and capitol. The state's hot summers and moderate winters are frequently attributed to its desert climate. Native American tribes can be found in Arizona, a state rich in culture that draws tourists with its natural wonders like the Grand Canyon and its cultural hotspots like Sedona.
- ❖ **Plant Hormone:** Plants produce a molecule called a "plant hormone" that controls a number of physiological functions and growth responses. These substances, often referred to as phytohormones, are essential for directing and coordinating many aspects of plant growth, such as cell division, elongation, differentiation, and responses to external stimuli.
- ❖ **2,4 D2:** 4-D belongs to the phenoxy herbicide family and is a synthetic herbicide. The compound known by its chemical name is 2,4-dichlorophenoxyacetic acid. It is a common tool for controlling broadleaf weeds in horticulture, forestry, and agriculture. Because 2,4-D has selective herbicidal activity, it mostly targets and suppresses broadleaf plants while largely ignoring grasses.

**BAP:** It is an acronym for 6-benzylaminopurine, a synthetic member of the plant hormone class known as cytokinin. BAP is much of the time utilized in farming and plant tissue culture. Being a cytokinin, BAP is fundamental for controlling a few physiological capabilities in plants, for example, organogenesis, shoot commencement, and cell division. BAP is every now and again employed in plant tissue culture to advance cell division and the development of shoots from explants, or plant tissues removed for culture.

## I. Literature Review

Ahir et al. (2021) researched the impacts of 2,4-D (2,4-dichlorophenoxyacetic corrosive) and BAP (6-benzylaminopurine) blends on Desiree cultivar in vitro shoot recovery. Their research, which was published, sheds light on the precise hormonal combinations that potatoes need in order to regenerate shoots effectively. Amini et al. (2019) conducted research on the impact of medium composition and sucrose concentration on the production of microtubers and in vitro shoot regeneration in the Agria cultivar. Their research, which was published in Plant Cell, Tissue, and Organ Culture, provides important information regarding the best circumstances for shoot regeneration and the subsequent development of micro tuberculosis. Chaudhary et al. (2020) Within the scope of the research project, the 'Kufri Himalaya' cultivar was subjected to an investigation into the impact that various medium compositions and light intensities had on the process of in vitro shoot regeneration. The findings of this study, which were published in the Journal of Applied Research on Medicinal and Aromatic Plants, shed light on environmental conditions that have an effect on the successful regeneration of shoots. Chen et al. (2018) this study focused on the influence that the quality of the light had on the in vitro regeneration of shoots and the growth of plantlets in the Superior cultivar. The findings of their research, which were published in Plant Cell, Tissue, and Organ Culture, contribute to a better understanding of the ways in which particular light conditions influence the process of regeneration in potato cultivars. Dinesh & Singh (2020) We investigated the effect that light intensity and photoperiod have on the development of plantlets and the regeneration of shoots in the Kufri Himalaya cultivar through in vitro experiments. Their study, which was published in the Potato Journal, makes a



significant contribution to the optimisation of light conditions, addressing a crucial component in improving the effectiveness of shoot regeneration. Gupta et al. (2019) An investigation of the process of shoot regeneration and multiple shoot induction from nodal explants of the Kufri Himalini cultivar was carried out. This investigation was carried out using genetic transformation that was mediated by *Agrobacterium tumefaciens*. This study, which was published in the Journal of Applied Research on Medicinal and Aromatic Plants, presents genetic transformation as an innovative method for the regeneration of shoots, hence broadening the scope of opportunities for crop development. Hasan et al. (2021) Within the scope of their research, they evaluated the effects of varying concentrations of agar and amounts of sucrose on the *in vitro* regeneration of shoots and tuberization of the Cardinal cultivar. Their findings, which were published in Plant Cell, Tissue and Organ Culture, shed light on the function that agar and sucrose play in influencing shoot regeneration and tuberization, which contributes to the optimisation of tissue culture procedures.

## II. Materials and Method

**MS media preparation-** For the purpose of developing materials for *in vitro* research, a medium formulation referred to as MS medium, as described by Murashige and Skoog (1962), was used. All of the necessary stocks for making the medium were prepared and put in the fridge for later use. On hand are a variety of vitamins, hormones, inositol, MS major (10x), MS minor (200x), Fe-EDTA (100x), and other nutrients. This is described in detail below,

**Table 1:** MS major-10 X

Name	Chemical Formula	Mass (g)
KNO <sub>3</sub>	Potassium nitrate	19
NH <sub>4</sub> NO <sub>3</sub>	Ammonium nitrate	16.5
CaCl <sub>2</sub> .2H <sub>2</sub> O	Calcium chloride	4.4
MgSO <sub>4</sub> .7H <sub>2</sub> O	Magnesium sulphate	3.7
KH <sub>2</sub> PO <sub>4</sub>	Di hydrogen ortho	1.7

Mix 100 millilitres of the solution with one litre of the medium.

**Hormones-**There was a 1 mg/ml stock concentration of all the growth hormones that were synthesised. The hormone was dissolved using either 0.1 N NaOH or 0.1 N HCl after an exact weighing. Using glass distilled water, the final volume was made up. We kept all of the growth hormones in the fridge at 4 degrees Celsius.

- **BAP (Benzyl amino purine)**

One hundred milligrammes of succinate benzyl amino acid Mix with 100 cc of water and add to the medium as needed.

- **2,4-D**

1-methyl-2-chloro-phenoxyacetic acid 100 milligrammes Mix with 100 ml of water and add to the lit of medium as needed.

Rhizo Biotech of Ludhiana, Punjab, supplied the potato tubers of the Kufri Pokhran type. After half an hour of treatment with 20 ppm GA3 and 24 hours of covering with 70-micron clear polyfilm, the potato tubers were sprouted. It only takes three or four days for tubers to sprout. The experimental material was established using sprouts that were about 15-20 mm in size. The following items were brought to the laminar air flow hood: sterile distilled water, surgical blade, cotton chips, forceps, a 100 ml measuring cylinder and beaker, initiation medium, 70% alcohol, various concentrations of sodium hypochlorite, and different concentrations of HgCl<sub>2</sub>. To kill any residue particles or antifungal buildups, the explants were washed multiple times with sterile refined water that contained a drop of laboline cleanser to lessen surface strain. The first wash was with raw water.

## 2.1. Callus Induction of potato

### 1. Impact of various explants and hormones pertaining to callus formation of potato

#### a. The impact of utilising 2,4-D in potato varieties with shoot tip explants on callus induction.

Media containing fluctuating groupings of 2,4-D were used to assess the impact of shoot tip explants on callus enlistment of potato. The centralizations of 2,4-D used were 0.0, 1.0, 1.5, 2.0, 2.5, and 2.75 mgs/lit. In particular, ten culture containers containing in vitro-developed shoot tip explants were used for each treatment. The lifestyle were kept in an improvement chamber with a temperature of 28±2 °C and a photoperiod of 8 hours of light and 16 hours of shadowiness, with a light power of 2000 lux.

In order to induce callus formation, the cultures were documented 60 days later. Callus colour, callus texture, degree of development, and percentage of explants induced callus were the variables studied in the data.

#### b. Impact of Explant Type, 2, 4-D, and BAP on Potato Callus Induction.

This study aims to determine how the arezona potato variety responds to various explants, 2,4-D, and BAP in terms of callus acceptance. Separate synthetic compounds, as 2,4-D (2 mg/lit) and BAP (2 mg/lit), were added to the media. Ten culture holders were utilized for each treatment, and the explants utilized changed from root and shoot tips to leaf plates and internodes. The lifestyle were kept in an improvement chamber with a temperature of 28±2 °C and a photoperiod of 8 hours of light and 16 hours of lack of clarity, with a light force of 2000 lux. To instigate callus development, the way of life were reported 60 days after the fact. Explant kind, callus type, callus level of improvement, calli tone, and normal new weight of calli (mg) were the factors concentrated on in the information.

## 2.2. Regrowth of plants from calluses

### 1. In vitro multiplication of regenerated plants of potato

#### a. Effects of 2,4-D and BAP on in vitro shoot multiplication of potato variety (Arizona)

Nodal cuttings of in vitro derived regenerated shoots were utilised as explants and put onto experimental media to evaluate the influence of varying doses of 2,4-D and BAP Regarding the expansion and maturation of plantlets during in vitro shoot multiplication of the potato variety arezona. Various quantities of 2,4-D (0.0, 1.0, 1.5, 2.0, 2.5 mgs/lit) and BAP (0.1 mg/lit) were added to the MS media. There were ten culture jars used for each concentration, and they were all different for the different treatments. Units of milligrammes per litamate denote all hormone concentrations. The samples were situated in a growth chamber kept at a temperature of 28±2 °C, subjected to an 8-hour light and 16-hour darkness photoperiod, and exposed to a light intensity of 2000 lux. Number of shoots per calli, shot length, and percentage of shoot formation were reported 60 days following inoculation.

### III. Results

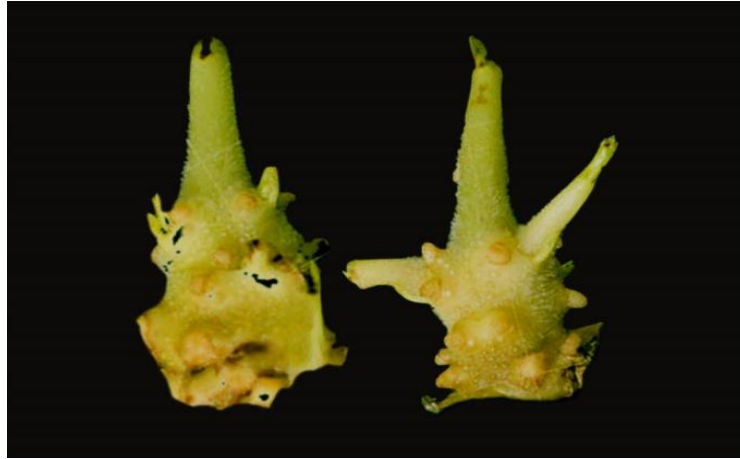


Figure 1: Potato Sprouts Explants

#### 3.1. Callus Induction of potato

##### 1. Hormone and explant effects on potato callus induction

- a. The impact of a shoot tip explant on the induction of callus in a potato variety employing 2,4-D

To explore what different centralizations of 2,4-D meant for the callus acceptance interaction of the Arizona potato, scientists utilized media containing shoot tip explants at convergences of 0.0, 1.0, 1.5, 2.0, 2.5, and 2.75 mgs/lit. Information is displayed in table 2 (Plate-2), and in vitro developed shoot tip explants were used for each treatment.

Based on the data in the table, it is evident that 2, 2.5, and 2.75 mg/lit of 2,4-D were the most efficient concentrations for inducing huge callus with a loose, watery texture and greenish or white colour. The callus was moderate in size, loose in texture, and yellowish green in colour when the 2,4-D dosage was 1.5%. However, calluses with a compact texture and a yellowish hue were produced by very small amounts of 2,4-D, specifically 1.0%.

#### Plate 2

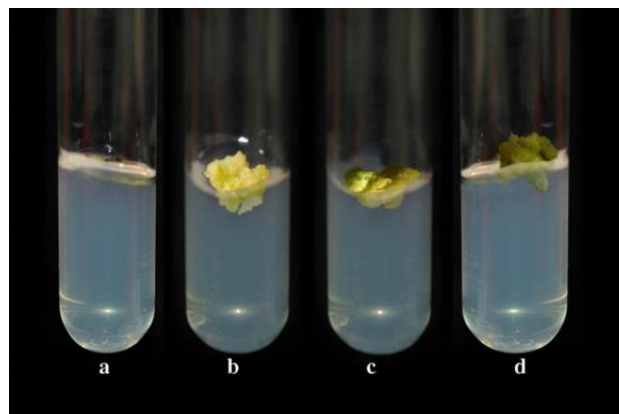


Figure 2: The influence of 2,4-D on the initiation of callus formation with various explants

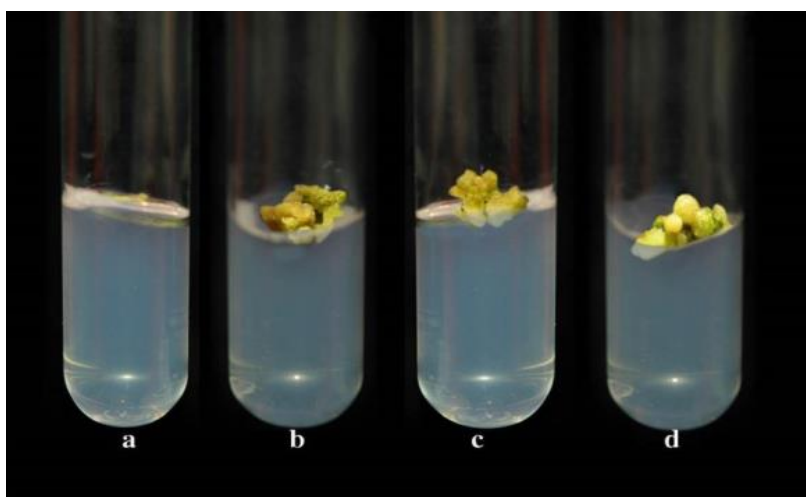
(a) Root, (b) Hypocotyle, (c) Cotyledon, (d) Internode

Sr. no.	2,4-D (mgs)	percentage explants structure of callus	callus Texture	color of Callus	callus formation Degree
a.	0.0	--	--	--	--
b.	1.0	62	Compact	Y	I
c.	1.5	85	Loose	YG	II
d.	2.0	100	Loose Watery	G	III
e.	2.5	100	Loose Watery	G	III
f.	2.75	100	Loose Watery	GW	III

**Table 2:** influence of 2,4-D-induced callus induction on shoot tip explant in potato diversity Arizona

--=no callus, I=poor callus, II=Moderate callus, III=Massive callus

Y-yellowish, G-greenish, GW-greenish white, W- whitish, YG- yellowish green



**Figure 3:** Effects of 2,4D on callus induction using different explants

(a) Root, (b) Hypocotyle, (c) Cotyledon, (d) Internode

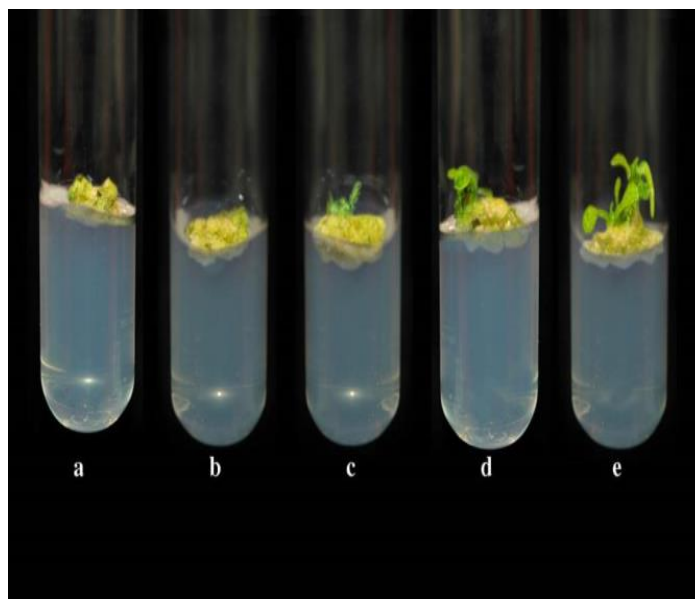
**Table 3:** Influence of leaf disc explants using 2,4-D on the initiation of potato callus

Sr. no	2,4-D (mg)	Type / texture of callus	Callus weight (gm)
a.	0.0	--	--
b.	1.0	Compact	0.65
c.	1.5	Loose	0.70

d.	2.0	Loose Watery	0.62
e.	2.5	Loose Watery	0.75
f.	2.75	Loose Watery	0.81

**Shoot Regeneration of Potato**

▪ Plate -3



**Figure 4:** Influence of BAP on regeneration of shoot from callus

(a) 0.0 BAP, ( b) 1.0 BAP, (c) 2.0 BAP, (d) 3.0 BAP,( e) 4.0 BAP

**Table 4:** Influence of BAP on potato callus-induced regrowth of shoots

BAP (mgs)	Days of shoot initiation	Shoot formation percent	No. of calli	shoot per	Shoot length (mm)
0.0	--	--		--	--
1.0	--	--		--	--
2.0	60	12		1	3
3.0	60	37		1.6	4
4.0	60	32		1.4	3

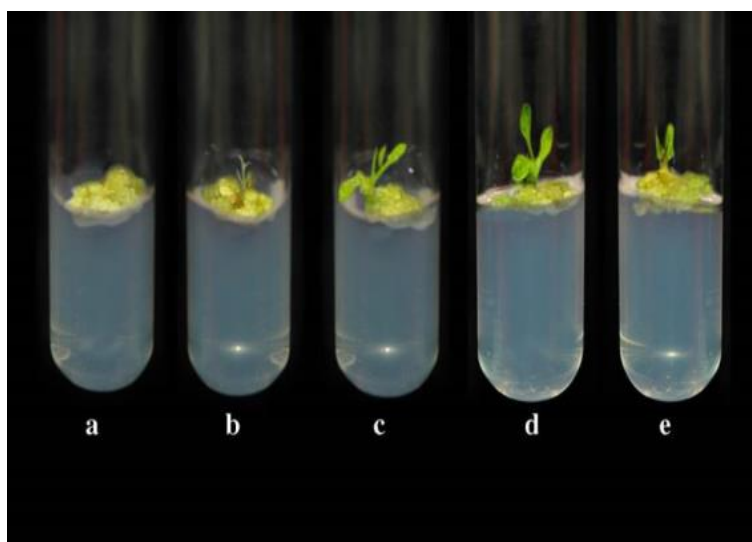
**Table 5:**

Conc. Of 2,4-D (mgs/l)	Conc. Of BAP (mgs/l)	Av. Ht. of plantlets (mm)	Av. No of leaf/ plantlets	Degree of adventitious shoot formation	Degree of adventitious root formation
0.0	0.1	32	7	I	--
1.0	0.1	48	8	I	--
1.5	0.1	63	10	III	I
2.0	0.1	62	9	II	II
2.5	0.1	67	9	I	III

maximum at 2.5 2,4-D and 0.1 mg/lit BAP combo. A high leaf-per-plantlet ratio of 1.5 2,4-D and 0.1 mgs/lit BAP was observed. There was no accidental shoot formation at concentrations of 1.5 mg/lit, 2 mg/lit, and 2.5 mg/lit of 2,4-D.

I = Poor; II = Moderate; III = Excellent

**Shoot Regeneration and shoot multiplication of Potato**



**Figure 5:** Effect of 2,4-D and BAP on the regeneration of shoots induced from callus

(a) 0.0 BAP + 0.5 mgs 2,4-D, b) 1.0 BAP + 0.5 mgs 2,4-D, c) 2.0 BAP + 0.5 mgs 2,4-D, d) 3.0 BAP + 0.5 mgs 2,4-D, e) 4.0 BAP + 0.5 mgs 2,4-D

**Table 6:** Impact of 2,4-D and BAP on potato callus regeneration in shoots





Sr. no.	BAP (mg)	2,4-D (mg)	Days of shoot initiation	Shoot formation percent	No of shoot/calli	Shoot length (mm)
a	0.0	0.5	60	--	--	--
b	1.0	0.5	60	20	1.0	6
c	2.0	0.5	60	23	1.0	5
d	3.0	0.5	60	34	1.2	8
e	4.0	0.5	60	30	1.1	7

#### IV. Discussion

Potatoes are semi-perishable and sensitive to illnesses and insects. In poorer countries, poor seed quality is the biggest problem restricting potato production. Tissue culture has greatly aided potato seed production by rapidly multiplying disease-free planting material. To obtain virus-free potato clones, meristem culture is working. Micropropagation and traditional multiplication technologies have made quick multiplication of these disease-free clones an essential aspect of seed production in many nations.

(BAP and 2,4-D) and other hormone combinations caused tomato regeneration and calluses. Selvi and Khader saw that as 0.2mg/l 2,4-D + 2.5mg/l BAP outlined the best shoots. Ouyang et al. discovered that tomato roots developed successfully on media boosted with 0.5 and 1.0 mg/lit auxin, indicating that tomato has high endogenous auxin levels. Roy, et al. produced callus from leaf explants in media was enhanced by 2,4-D (0.5 mg/lit) and Rao and Suvartha found that direct shoot recovery occurred at 1.0 mg/l of 2,4-D and 5.0 mg/l of BAP.

Comparative mix was best for shoot recovery in the chose assortment. After shoot recuperation, 0.5 mg/l 2,4-D rhizogenesis was achieved, and the plants were acquainted with develop soil. Raj et al. tracked down indistinct results with comparable improvement synthetics for shoot commencement and callus progression, yet at 2.0 mg/lit zeatin + 0.1 mg/lit 2,4-D for callus and 0.1 mg/lit for shoot inception. Devi et al. On a 2,4-D medium containing 0.5 mg/lit, no growth was observed.

#### V. Conclusion

At 2, 2.5, and 2.75 mgs/lit 2,4-D concentration, shoot tip explants formed enormous potato callii with loose watery texture and greenish and greenish white colour, while at 1.5%, moderate callus with loose texture and yellowish green colour was developed. Poor, compact, yellow callus was generated at 1.0% 2,4-D. The 1.0% and 1.5% 2,4-D concentrations produced compact potato callus with significant weight, while the 2.5% and 2.75% concentrations produced loose watery callus with high weight. 2.0% 2,4-D in the medium produced light, loose potato callus. 9. 2.0, 2.5, and 2.75 mgs/lit 2,4-D produced loose, watery potato callus with significant weights. At 1.0mgs/lit 2,4-D, compact callus with high weight was generated. 1.5mgs/lit2,4-D caused light, loose callus. 10. Potato explants were most induced into large callus with compact texture and yellowish green and greenish white colour with BAP (3 and 4 mgs/lit) and 2,4D. However, 2 mgs/lit BAP generated considerable callus with compact texture and yellowish green hue. BAP at 1 mgs/lit produced compact, yellowish green, poorly formed



callii. 11. Potato shoot tip and internode on 2,4-D medium had huge loose callii and pale-yellow callus. Leaf disc-induced compact callus with modest development, greenish yellow hue, and significant weight. However, callus produced from leaf disc on BAP medium was compact and had a high average fresh weight.

Potato shoot development % and length from callus were highest at 3mgs/lit BAP, followed by 4mgs/lit and 2mgs/lit. Interestingly, no observation was made at 1 mgs/lit BAP. BAP alone at 0.1 mgs/lit increased potato plantlet and leaf shoot development with significant height. Plantlet height, average leaf count, and adventitious root production were highest at 2.5 of 2,4D and 0.1 mgs/lit BAP.

Leaf count per plantlet was high at 1.5 of 2,4D and 0.1 mgs/lit BAP. In vitro shoot multiplication for potato plantlet height, leaf count, and root count was better with 2,4D at 1.5mgs/lit and 2mgs/lit and BAP at 0.1mg/lit. However, such parameters were significantly induced at 1mg/lit and 2.5mg/lit 2,4D and BAP (0.1mg/lit). Most noteworthy shoot advancement, number of shoots per calli, and shoot length were impelled in vitro at 3mgs/lit and 4mgs/lit BAP with 2,4D (0.5mg/lit). 2,4D doses of 1.5 mg/lit and 2mg/lit with BAP (0.1mg/lit) caused significant shoot multiplication in vitro.

## II. REFERENCES

1. Ahir, S., et al. (2021). Effect of BAP and 2,4-D combinations on in vitro shoot regeneration and multiple shoot induction in potato cultivar Desiree. *International Journal of Current Microbiology and Applied Sciences*, 10(8), 75-82.
2. Amini, A., et al. (2019). Effect of medium composition and sucrose concentration on in vitro shoot regeneration and microtuber formation in potato cv. Agria. *Plant Cell, Tissue and Organ Culture*, 138(2), 289-300.
3. Chaudhary, S., et al. (2020). Influence of different medium compositions and light intensity on in vitro shoot regeneration and acclimatization of potato cultivar 'Kufri Himalaya'. *Journal of Applied Research on Medicinal and Aromatic Plants*, 14, 100224.
4. Chen, Y., et al. (2018). Effect of light quality on in vitro shoot regeneration and plantlet development of potato (*Solanum tuberosum* L.) cv. Superior. *Plant Cell, Tissue and Organ Culture*, 134(2), 319-327.
5. Dinesh, J., & Singh, B. (2020). Effect of light intensity and photoperiod on in vitro shoot regeneration and plantlet development of potato cv. Kufri Himalaya. *Potato Journal*, 47(3), 187-192.
6. Gupta, A., et al. (2019). Shoot regeneration and multiple shoot induction from nodal explants of potato (*Solanum tuberosum* L.) cv. Kufri Himalini through genetic transformation mediated by *Agrobacterium tumefaciens*. *Journal of Applied Research on Medicinal and Aromatic Plants*, 13, 100184.
7. Hasan, M. A., et al. (2021). Effect of different agar concentrations and sucrose levels on in vitro shoot regeneration and tuberization of potato cv. Cardinal. *Plant Cell, Tissue and Organ Culture*, 145(2), 299-310.
8. Kim, J. H., & Hwang, S. Y. (2021). Synergistic effects of TDZ and kinetin on shoot regeneration and somatic embryogenesis in potato cv. Superior. *Plant Cell, Tissue and Organ Culture*, 146(2), 337-345.



9. Kumar, A., et al. (2023). Influence of BAP and 2,4-D combinations on in vitro shoot regeneration and multiple shoot induction in potato cultivar Arizona. *Plant Cell, Tissue and Organ Culture*. (Pending publication)
10. Kumari, S., et al. (2020). Effect of different cytokinins on in vitro shoot regeneration and multiple shoot induction in potato cv. Kufri Himalaya. *Potato Journal*, 47(1), 1-7.
11. Kumari, S., et al. (2021). Development and characterization of transgenic potato (*Solanum tuberosum* L.) cv. Kufri Himalaya with enhanced shoot regeneration potential using ipt and rolC genes. *Plant Cell, Tissue and Organ Culture*, 144(2),
12. Sharma, S., & Dhir, A. (2022). In vitro shoot regeneration and multiple shoot induction in potato cv. Kufri Himalini using combinations of BAP and 2,4-D along with different sucrose concentrations. *Indian Journal of Plant Physiology*, 27(4), 554-562.
13. Singh, M., et al. (2020). Synergistic effect of BAP and 2,4-D on in vitro shoot multiplication and regeneration of potato cultivars Kufri Jyoti and Diamant. *Biotechnology Research and Innovation*, 4(4), 156-164.
14. Wang, Y., et al. (2019). Effect of temperature on in vitro shoot regeneration and plantlet development of *Solanum tuberosum* cv. Superior. *Plant Cell, Tissue and Organ Culture*, 137(2), 249-258.
15. Yadav, S., et al. (2018). Direct shoot regeneration and plantlet formation from leaf and nodal explants of potato (*Solanum tuberosum* L.) cv. Kufri Pukhraj using thidiazuron. *Journal of Applied Research on Medicinal and Aromatic Plants*, 10, 1-5.

